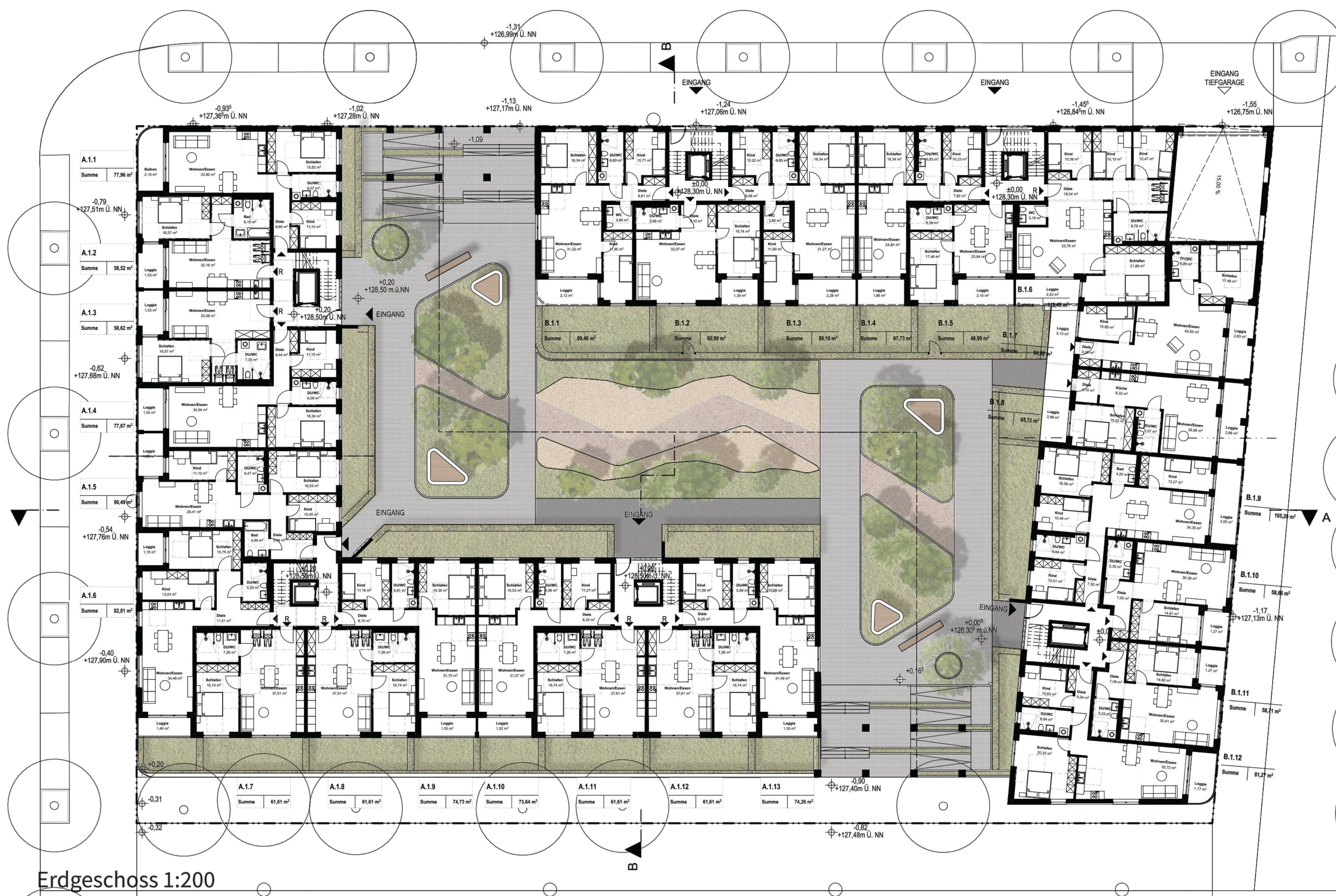
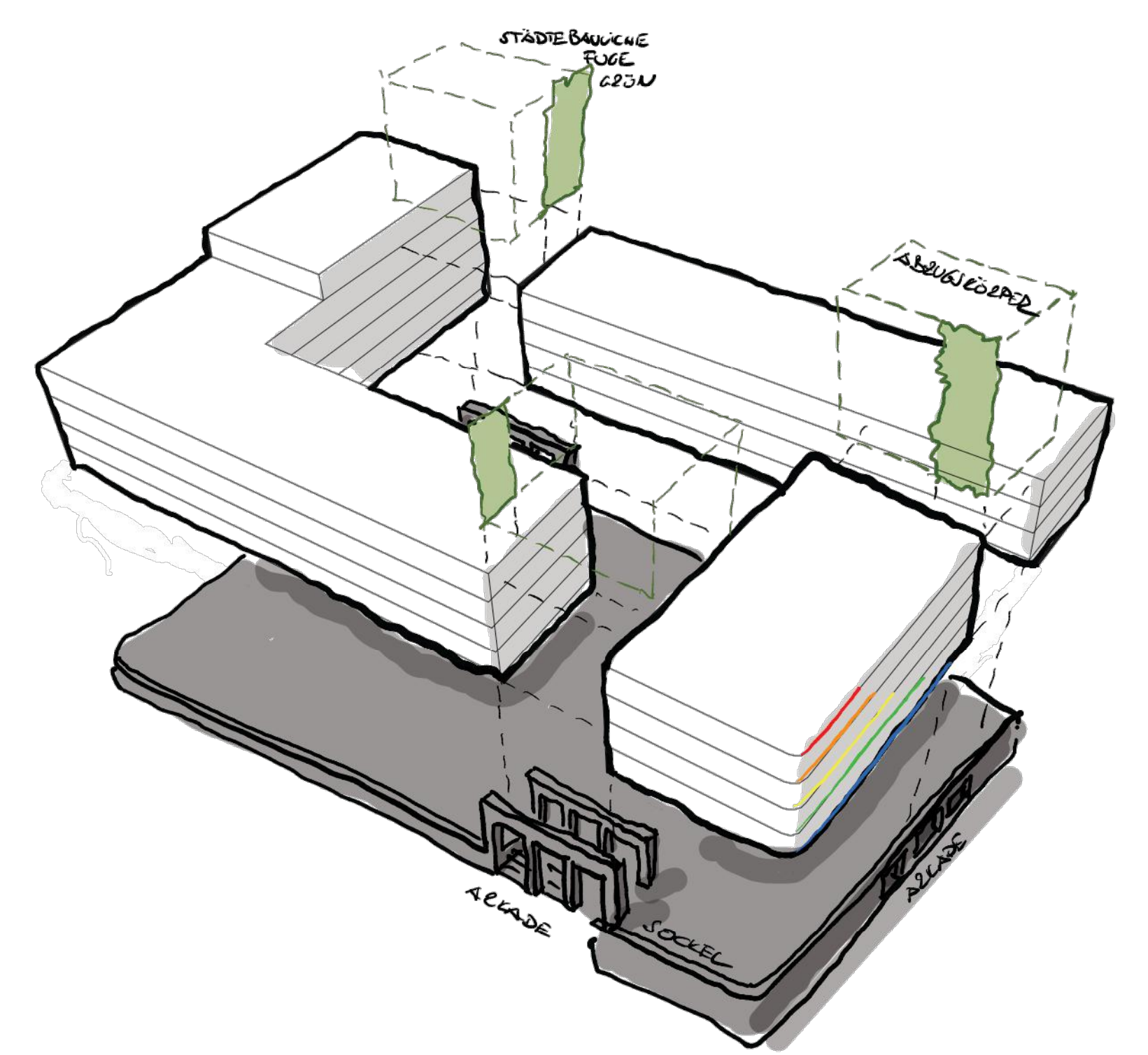


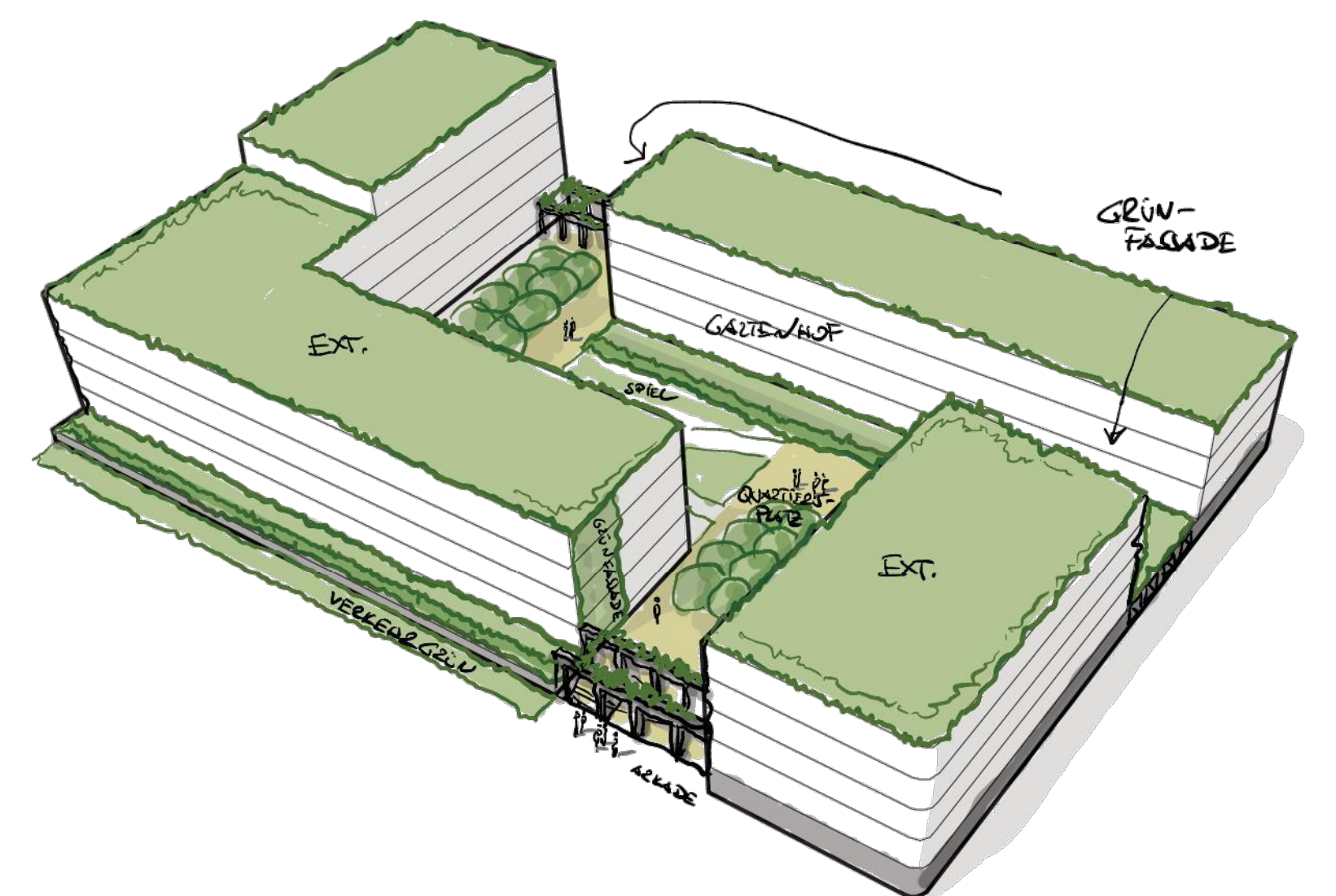
Lageplan 1:500



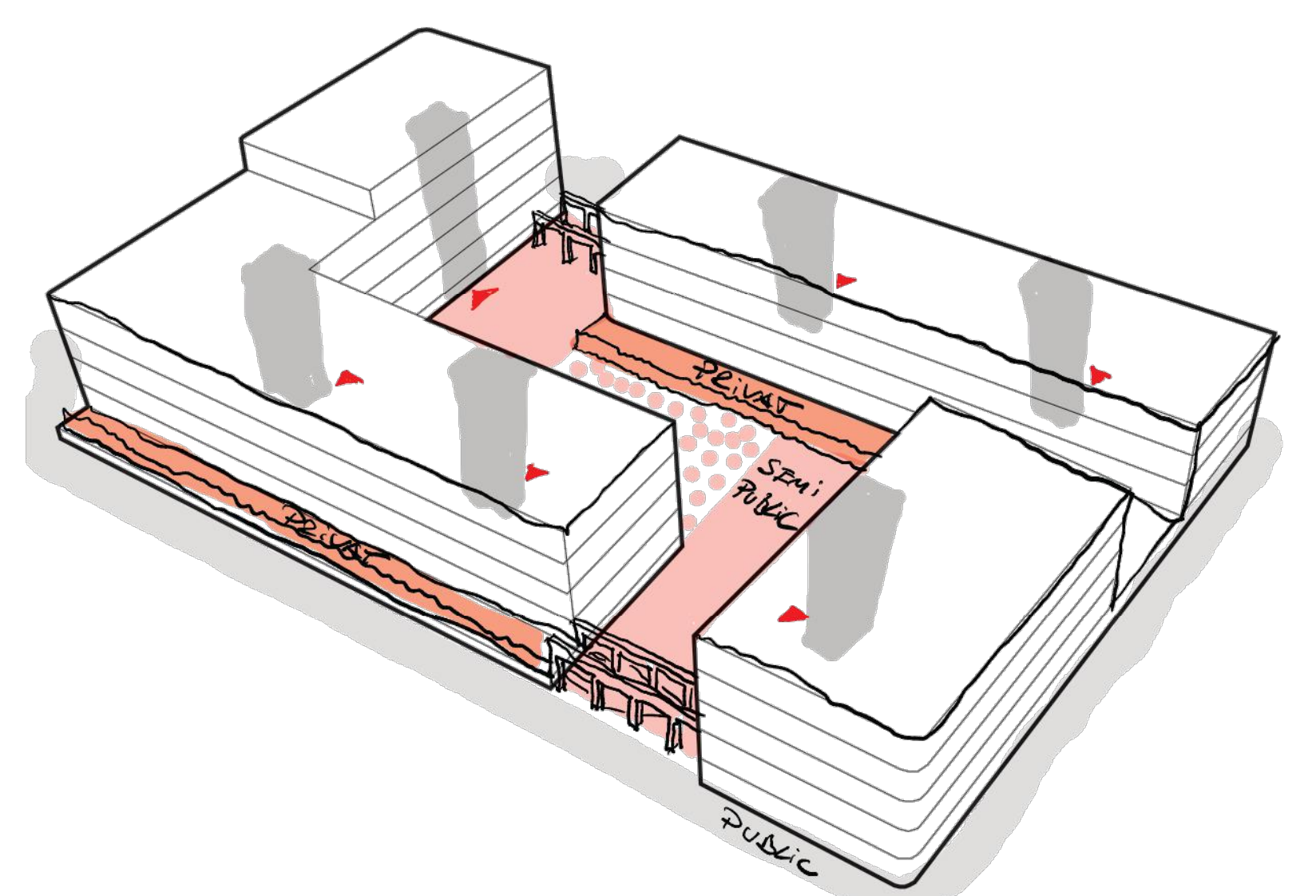
Erdgeschoss 1:200



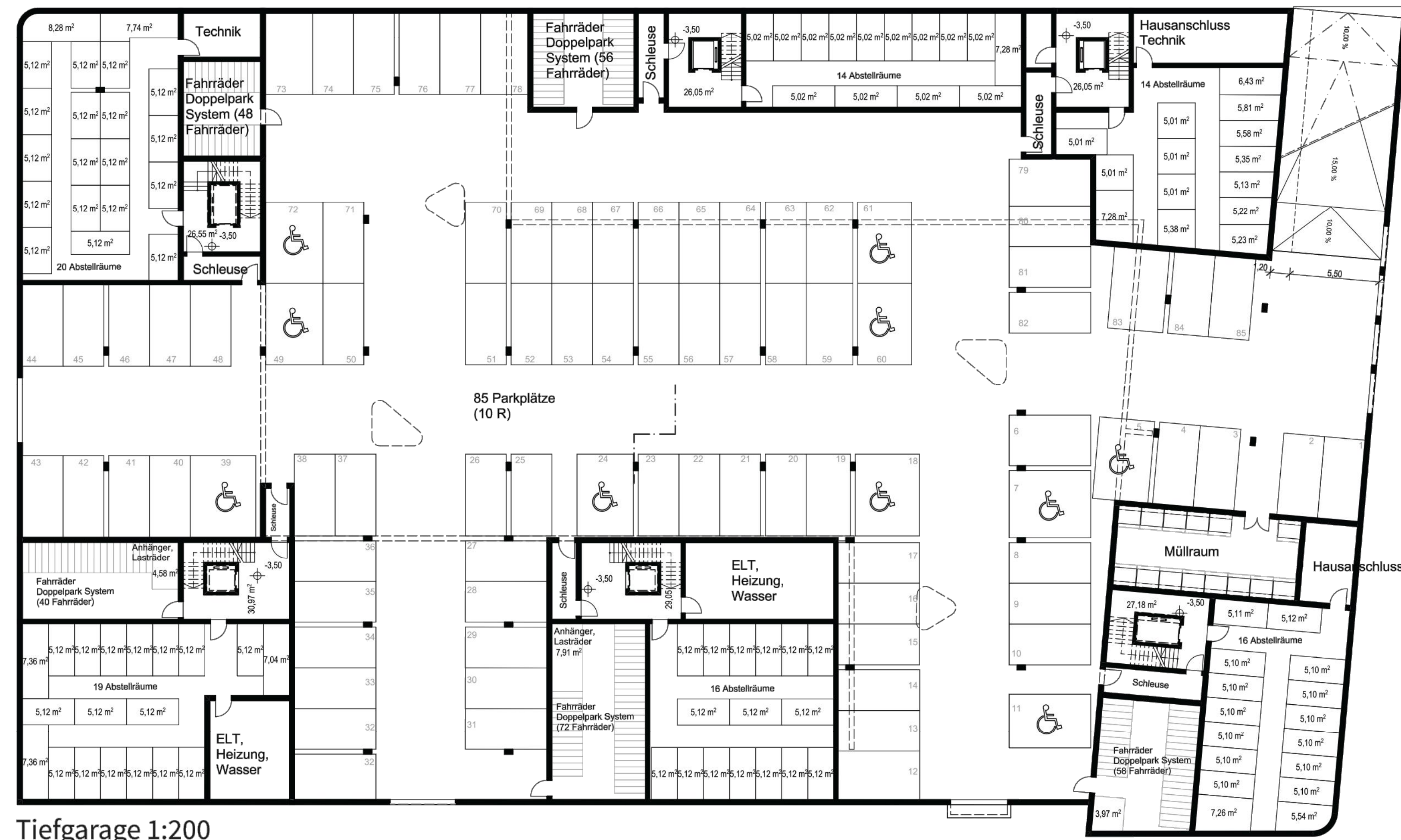
Konzept Baukörper auf Sockel mit städtebaulichen Fugen



Grünkonzept horizontal / vertikal



Erschließungskonzept und Zonierung



Tiefgarage 1:200



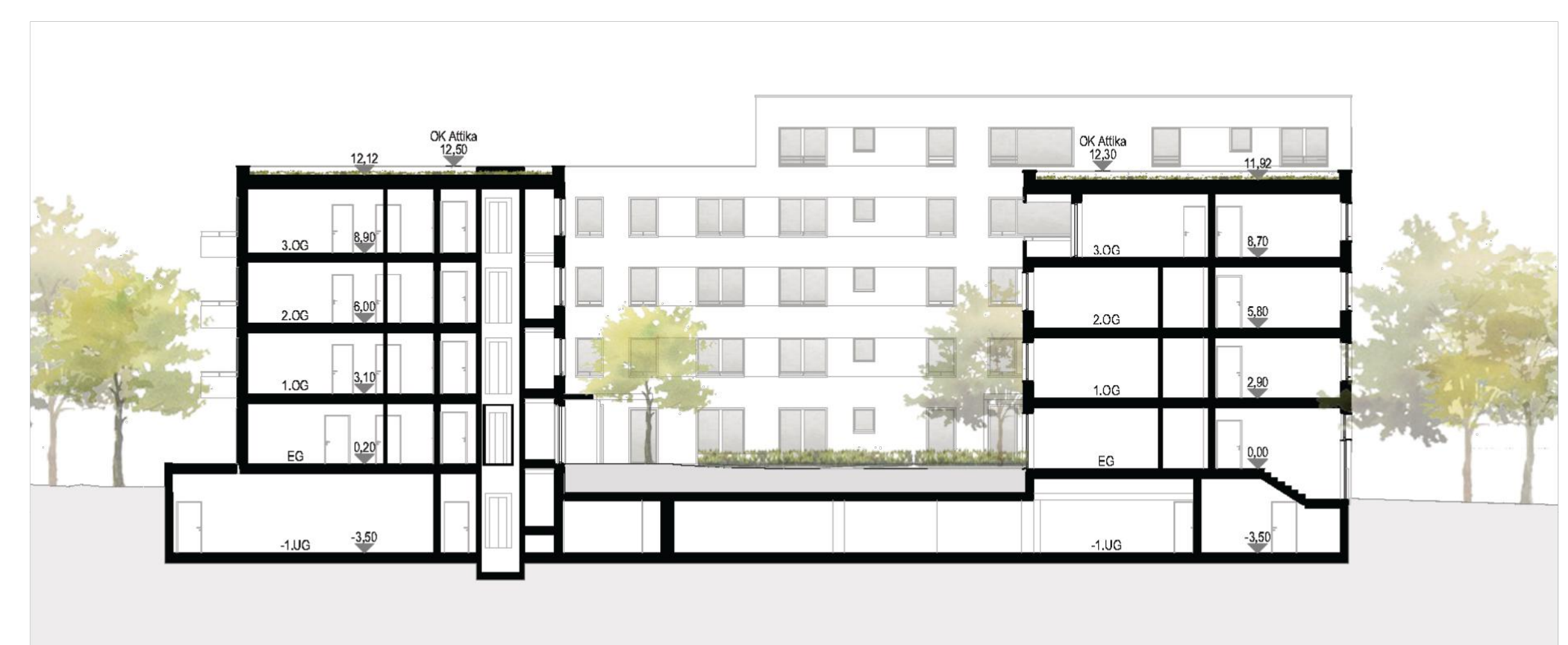
1.Obergeschoss 1:200



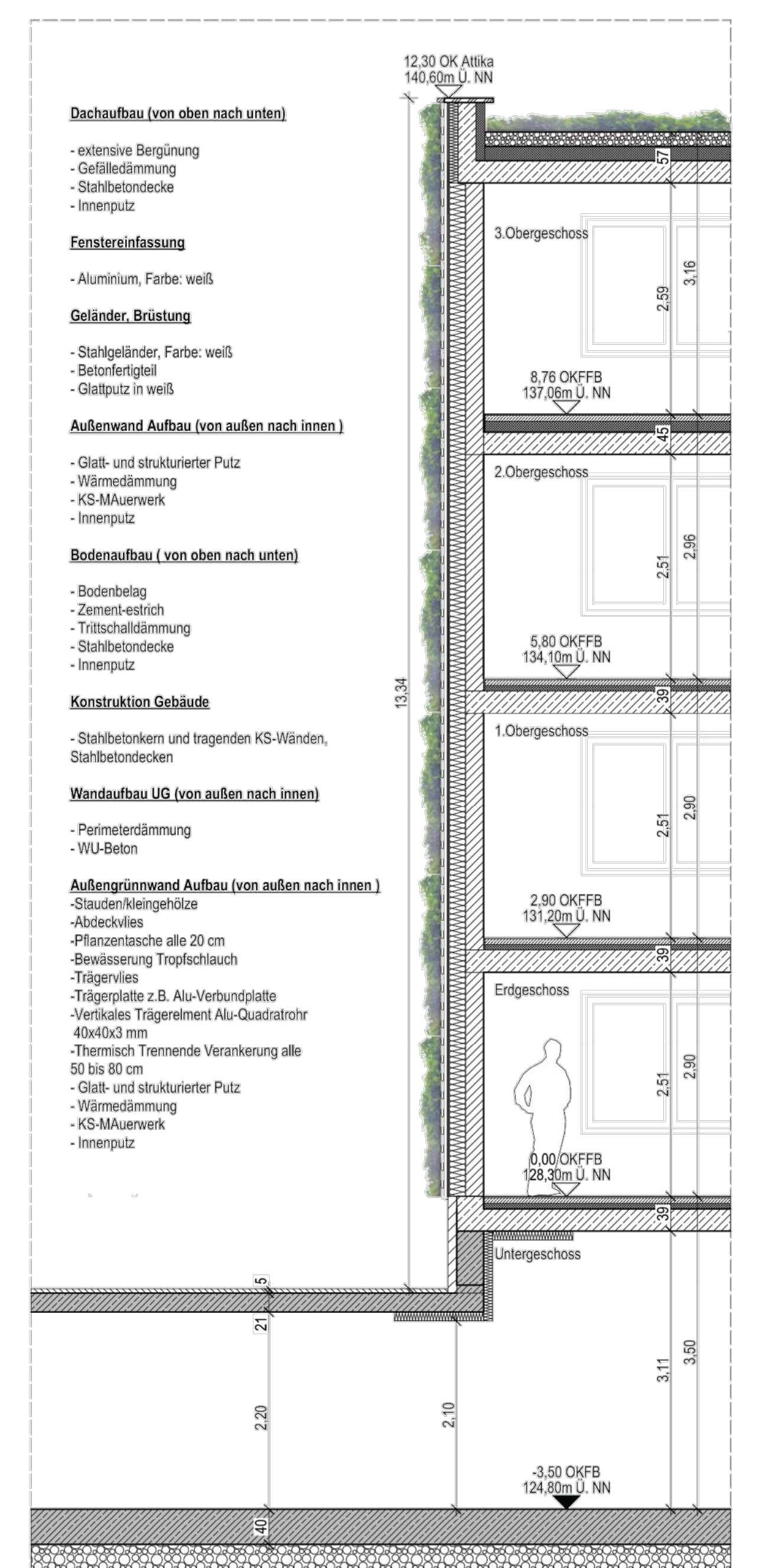
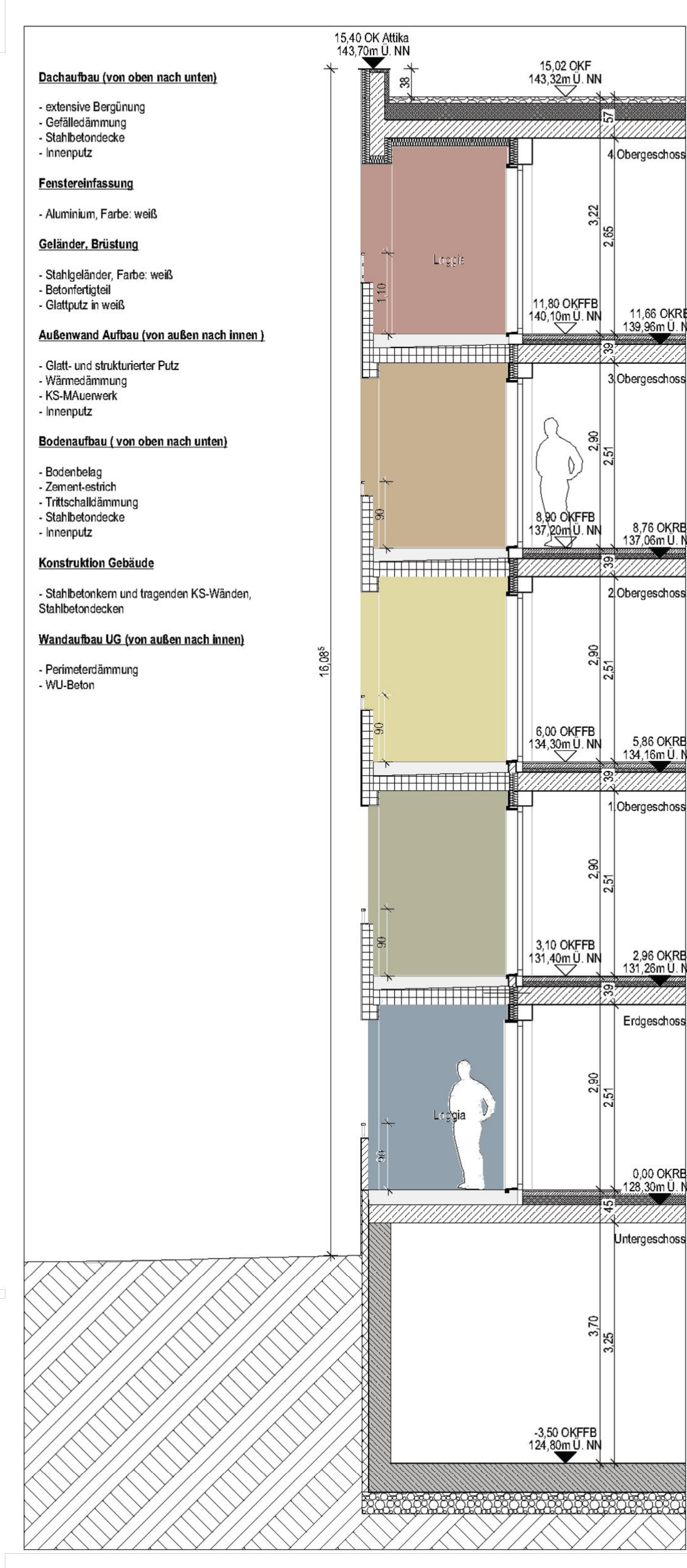
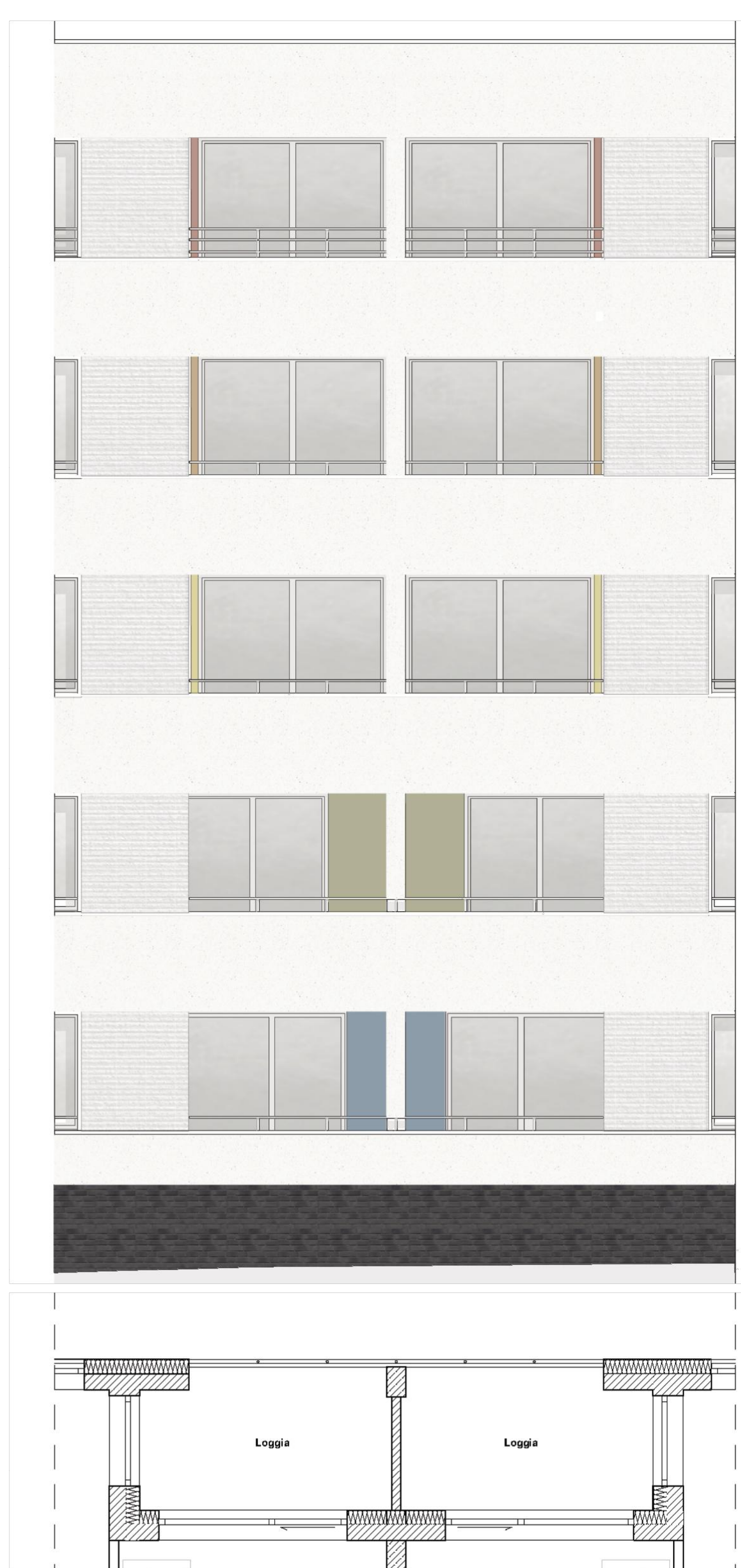
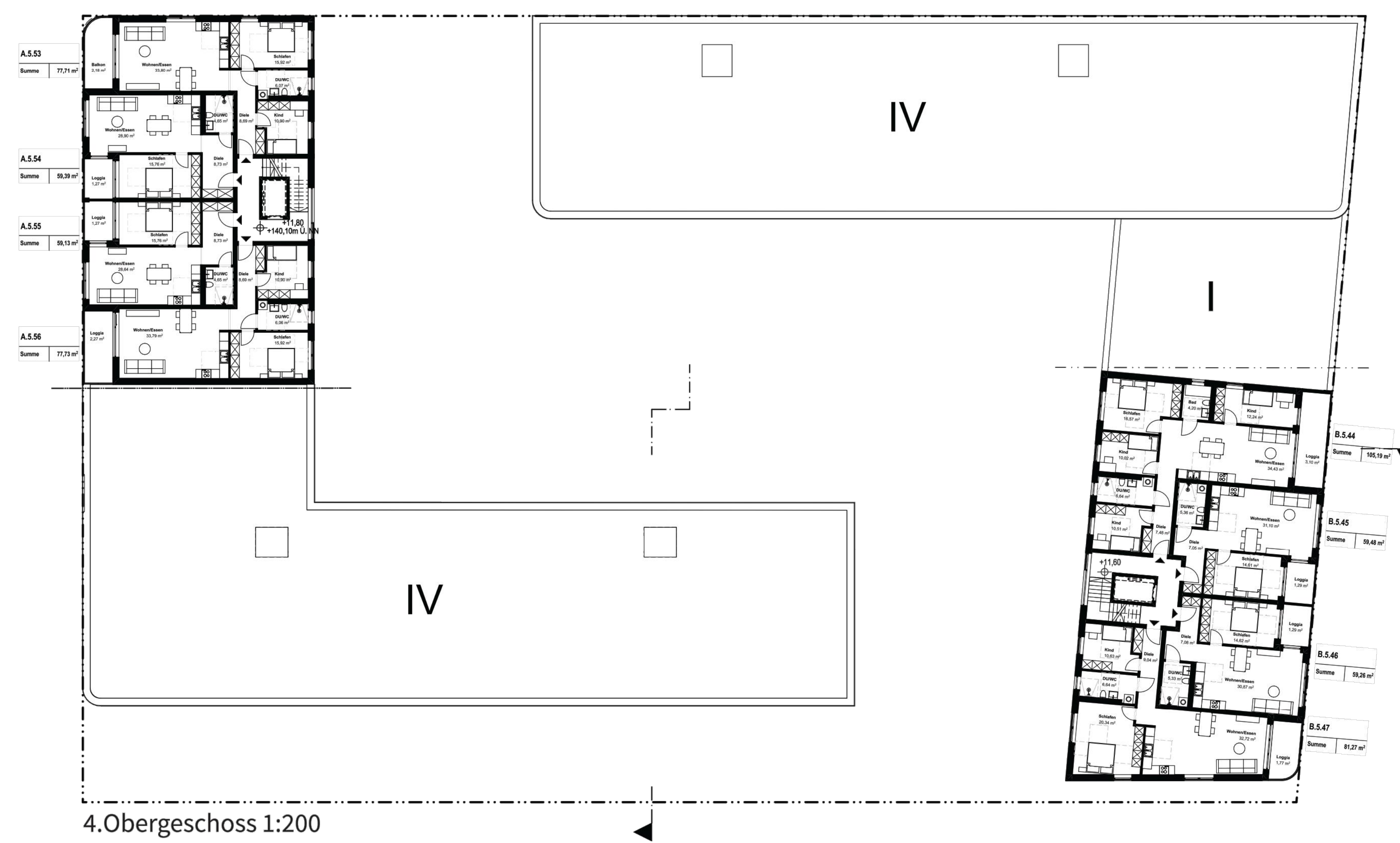
2.Obergeschoss 1:200



Schnitt A - A 1:200



Schnitt B - B 1:200



Detail Fassadenansicht/Grundriss 1:50

Detail Fassadenschnitt Loggia 1:50

Detail Fassadenschnitt Grünfassade 1:50



Südansicht 1:200



Westansicht 1:200



Nordansicht 1:200



Ostansicht 1:200

Perspektive aus Blickrichtung Nordost

